

good practice guide for marina managers



Leave only your wake in the sea

Bajurec Project

'LEAVE ONLY YOUR WAKE IN THE SEA' CAMPAIGN

good practice guide for marina managers



Join the campaign's messages compiled in the following good practice guide made available on our website

<https://paisajelimpio.com/en-el-mar-deja-solo-tu-estela/>

to disseminate these messages to your marina's users.

Send a message to join and your marina's logo (which we will upload to this section of our website) to

comunicacion@paisajelimpio.com

and we will grant your marina a diploma for actively participating in environmental protection, particularly in the fight against Marine Litter.

What is marine litter?

The term includes "any persistent, manufactured or processed solid material discarded, disposed of or abandoned in the marine and coastal environment" (UNEP, 2009).




Each year, between six and eight million tons of marine litter enter the oceans.

80% of this litter enters from land-based sources.

Marine litter is not only an aesthetic problem, it has a significant socio-economic impact, it threatens human health and safety and it has adverse effects on marine organisms and habitats.

The SEA cannot be considered to be a rubbish dump. Irrespective of the binding International Agreements in force signed by Spain, the sea CANNOT be used as an indiscriminate rubbish dump.

We find all kinds of waste ON THE BEACH. Cleaning beaches entails an enormous expense to coastal town councils.



Port activity generates a large amount of different kinds of waste that needs to be managed. All kinds of non-hazardous waste is generated by daily port business and during navigation. On the other hand, hazardous waste is also generated by the maintenance and repair of engines and hulls, as well as by offices.



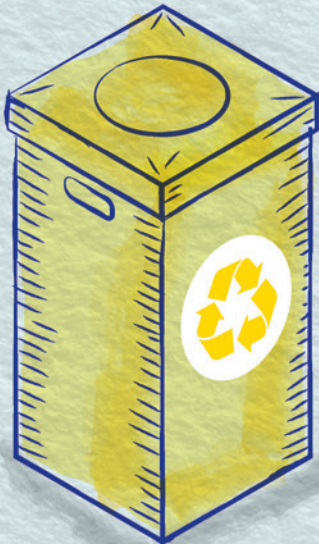
FOR OPTIMAL WASTE COLLECTION AND TO PROMOTE GOOD ENVIRONMENTAL PRACTICES IN PORT AND ON THE SEA, IT IS ESSENTIAL TO COORDINATE ALL THE STAKEHOLDERS AND HAVE THE APPROPRIATE ENVIRONMENTAL EQUIPMENT FOR ALL THE DIFFERENT PORT ACTIVITIES: FROM SUPPLY AND SERVICES THROUGH TO MAINTENANCE AND SPORTS ACTIVITIES ON THE SEA AND ACTIVITY IN THE PORT.

good environmental
practices as respects
waste in marina
management



* In waste management in offices

- Run **campaigns to disseminate information and raise awareness in employees** for appropriate waste separation and management.
- Apply the **3R rule: Reduce, Reuse and Recycle**.
- **Separate waste** and set up **containers for the different types of waste**.
- Deposit **waste that does not have conventional collection systems** or that is hazardous (toners, fluorescent tubes etc.) at **clean points**.
- **Do not pour any leftover cleaning products in the public sewer system** as they are toxic and very harmful to the aquatic environment.
- **Do not dump solid products or materials that could cause obstructions** (nappies, hygiene products, leftover food, oil etc.) **into the sewer system**.



* In solid waste management in port

- **Make containers suitable for the class and volume of waste produced available** in sufficient number and in accessible locations.
- **Position the containers in areas where people frequently pass**, at dock exits, near toilets, in the general port offices, at dry docks, in garages and adjoining offices and facilities.
- **Inform users of where these containers are located** and what types of waste they can accept.
- **Set up suitable places to store hazardous waste**, using sealed containers specific to each type of waste and clearly label them. This is the only way to avoid mixing waste.
- **The areas where this waste is located must be easy to access both for users and managers** authorised to remove it.



* In solid waste management in port

- **The waste generated when using and maintaining boats must be deposited in suitable containers in the port.**
- Domestic waste will be deposited in **containers for paper/cardboard, packaging, glass and other waste.**
- **Hazardous waste**, such as mercury batteries, lead batteries, contaminated packaging, mineral oil, lubricants, bilge oil, oil filters, waste paints and paint thinner, soaked rags, absorbent material, detergents with hazardous substances etc. **will be deposited in the containers made available in the port for these different kinds of waste or, failing this, at the clean point.**
- **Any abnormal situations noticed in domestic or hazardous waste containers** (signs of leaks, cracks, spills, stains on the docks, build ups where there should not be any etc.) **should be reported as soon as possible to port staff.**



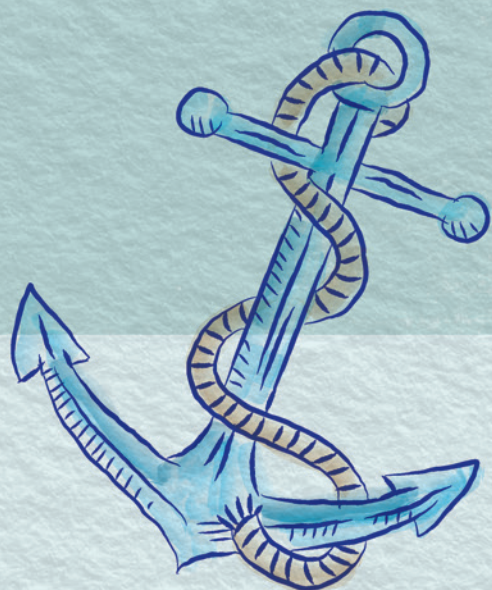
* In bilge and wastewater management

- **Have wastewater tanks available in boats** and make use of the collection service for such water.
- **Avoid spilling fuel and check tanks and hoses** to prevent leaks.
- **Avoid using the toilet and shower on boats while they are anchored in the port.** These services are available in the port facilities.



* In cleaning, winterising and maintaining boats

- In dry docks, **waterproof the ground and design the docks in such a way that they can be swept daily, prevent the entry of rainwater runoff** and enable the retention and subsequent **treatment of water coming from regular cleaning and repair operations.**
- **When cleaning boats in dry docks, it is recommended to use biodegradable detergents and soaps, avoiding the use of products containing phosphates,** use the amounts indicated by the manufacturer for all the different products used, use cloth, rather than paper, rags and deposit packaging for hazardous substances in the containers provided for such purpose.
- **When winterising boats, the bilges should be inspected and cleaned** before the boat is beached or stored for a prolonged period of time.
- **Completely inspect the boat** so as to ensure that there are no mechanical fluids.
- **Do not leave fuel tanks 100% full** to prevent possible spills when the boat is moved.
- **Ensure that the suction lines and values, as well as the fuel tank caps, are tightly closed.**
- **In garages, hulls are sanded, painted and varnished,** and engines are repaired and tuned.
- **The variety of work undertaken in garages generates a large amount of waste** that is very varied and needs to be properly managed.



VERY IMPORTANT

Do not throw waste generated on board (cigarette butts, organic waste, paper, packaging) into the sea.

Separate waste on board when collecting it to deposit it on arrival in port in the suitable containers.

Always use the port's containers and clean points.

In recreational fishing, do not throw fishing lines or hooks into the sea.

Prevent leaks and dripping, and avoid fuel and oil in the bilge.

Do not discharge bilge water into the sea, do so in the port's suction hoses.

Keep cloth rags, absorbent material and spades available to deal with accidental fluid leakage.

Empty containers of paint, thinners, varnishes and oil cans should be deposited in the appropriate containers or clean point.

Never pour used oils into the sewer system, or throw hygiene products or leftover food in office toilets.

Encourage other recreational boat users to take care of and protect the sea.

PROJECT TO PREVENT THE GENERATION OF WASTE AND ITS INAPPROPRIATE DISPOSAL IN THE MARINE ENVIRONMENT

FOCUSED ON RECREATIONAL AND INSHORE FISHING BOATS



BQJUREC is being run with the support of the Ministry for Ecological Transition's Biodiversity Foundation, through the High Tide Programme, co-funded by FEMP.

This initiative is part of the LIFE IP INTEMARES project "Integrated, innovative and participatory management of the Natura 2000 Network in the Spanish marine environment", coordinated by the Ministry for Ecological Transition through the Biodiversity Foundation.

"Free action co-funded by FEMP"

Clean Landscape Association

Tel.: 91 603 56 75

Email: info@paisajelimpio.com

Website: www.paisajelimpio.com